

Paterson Public Schools Annual Report

Presentation to the New Jersey Department of Education
State Board of Education

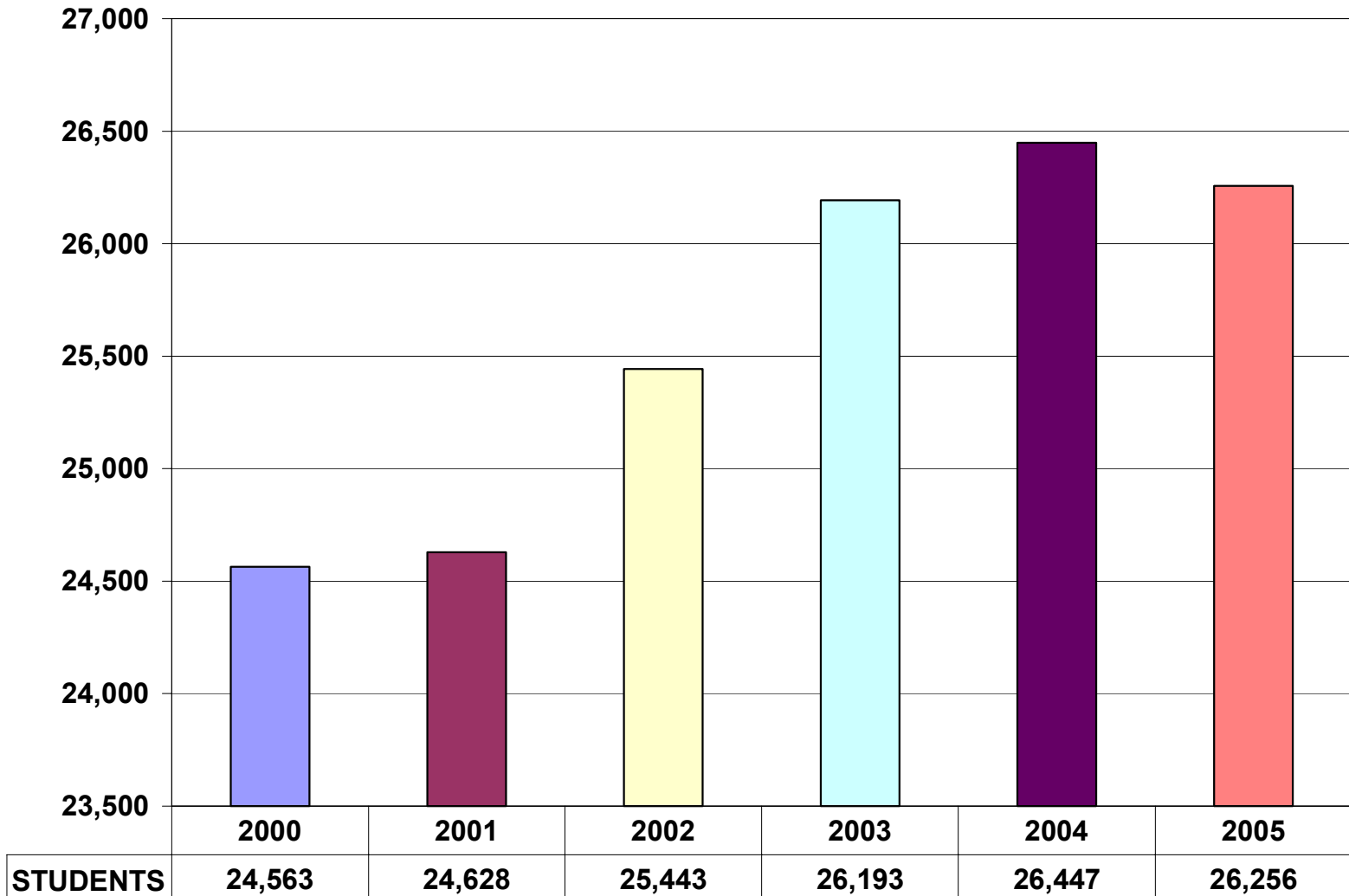
by

Dr. Michael E. Glascoe
State District Superintendent

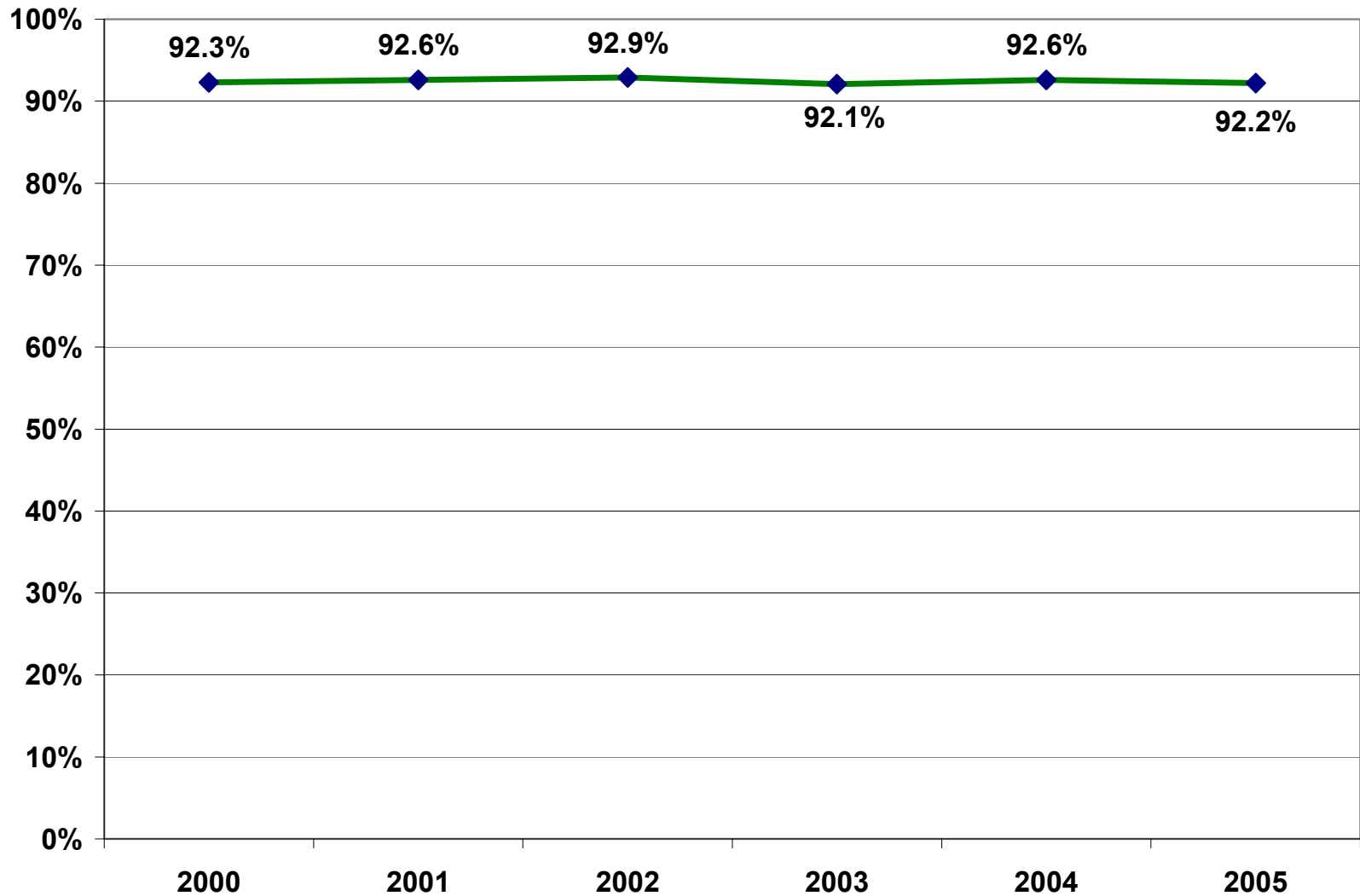
Agenda

- District Profile
- Student Achievement/Performance
- Academic Initiatives
 - Early Childhood
 - Elementary
 - Secondary
- Professional Development
- Organizational Leadership
- Professional Partnerships
- Community Partnerships
- Facilities – Long Range Facilities Plan

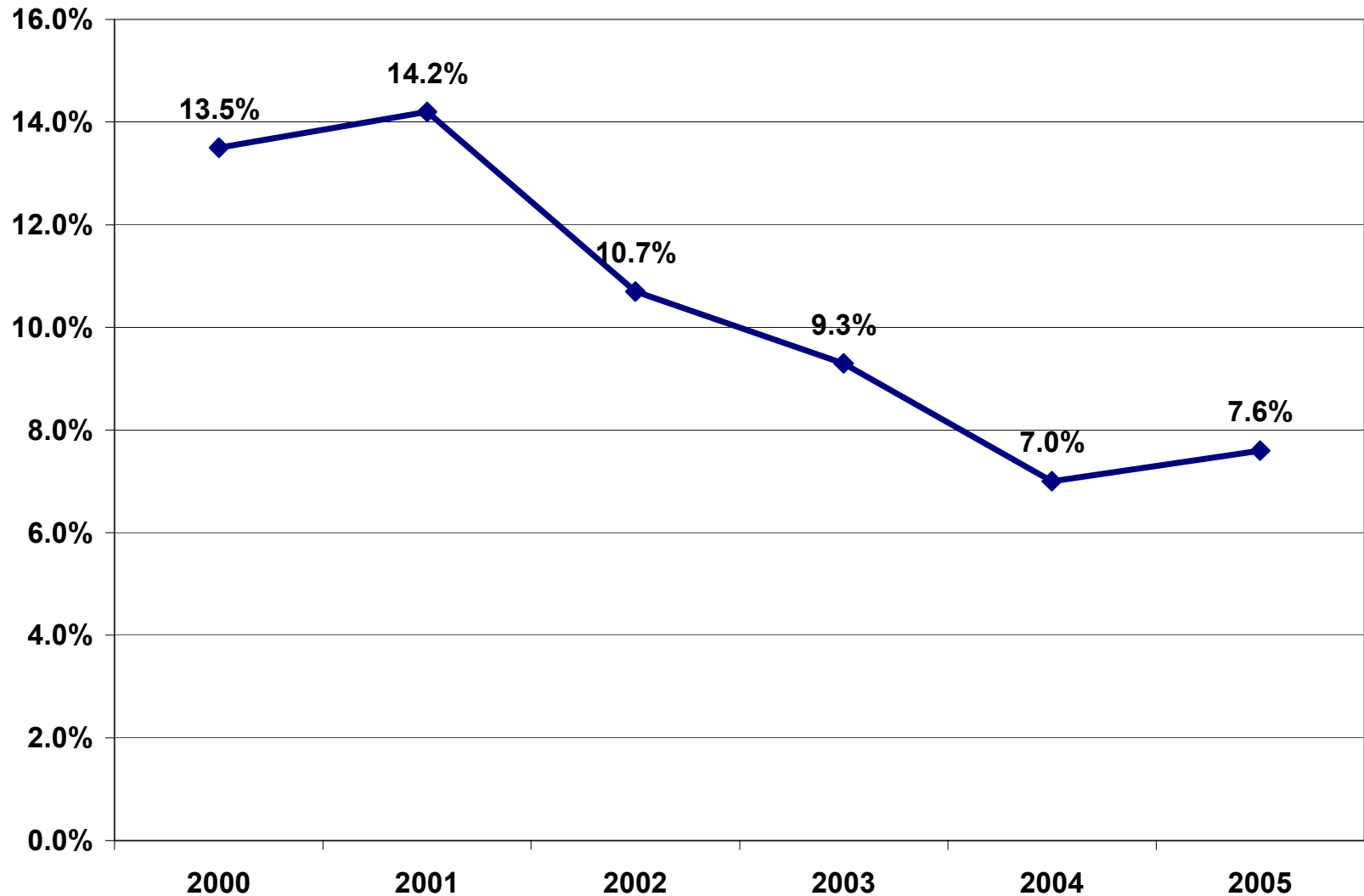
District Profile: Student Enrollment



District Profile: Student Attendance



District Profile: Dropout Rate



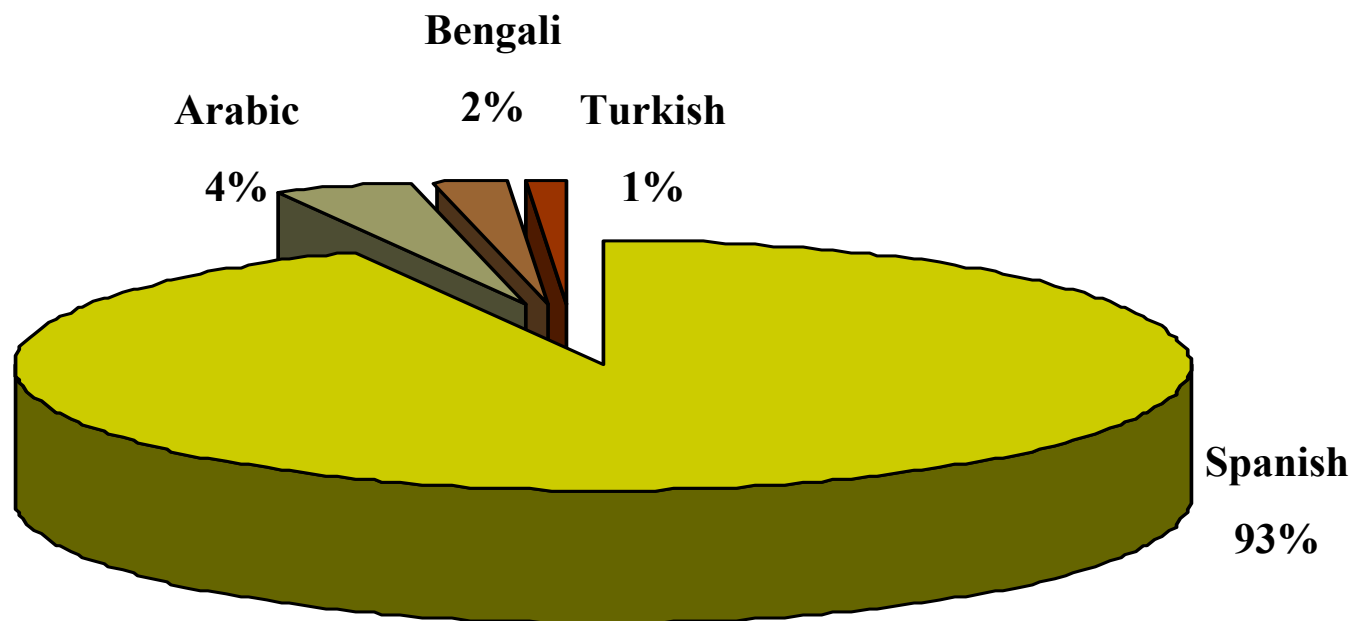
District Profile: Special Education

Number of Classified Students	4240
Number of Classified Students in District	3763
Number of Classified Students in Out-of-District Placements	477
Percentage of Students Receiving Special Education Services	16.1%

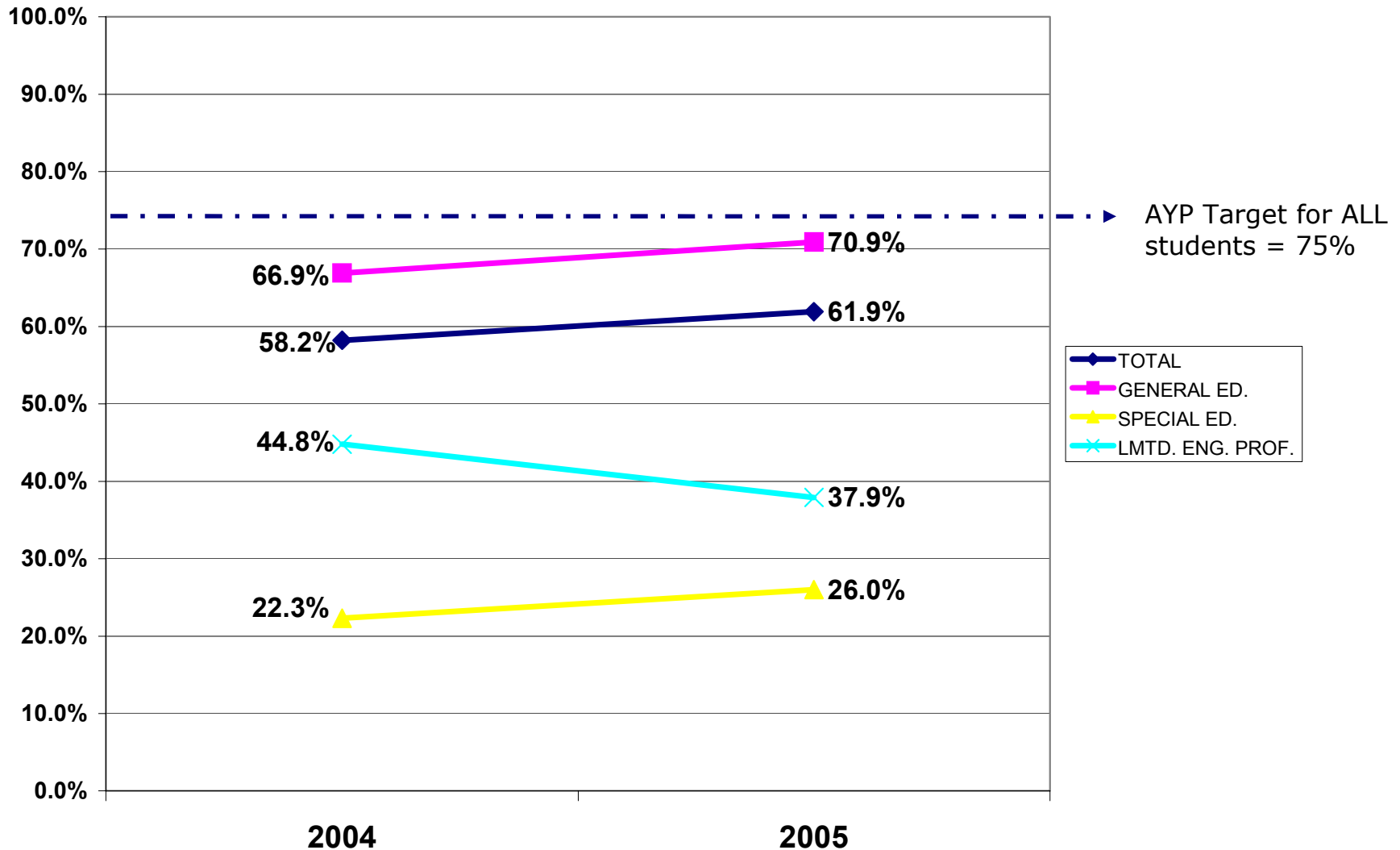
District Profile: Bilingual Education

Number of English Language Learners	4667
Percent of English Language Learners	17.8%

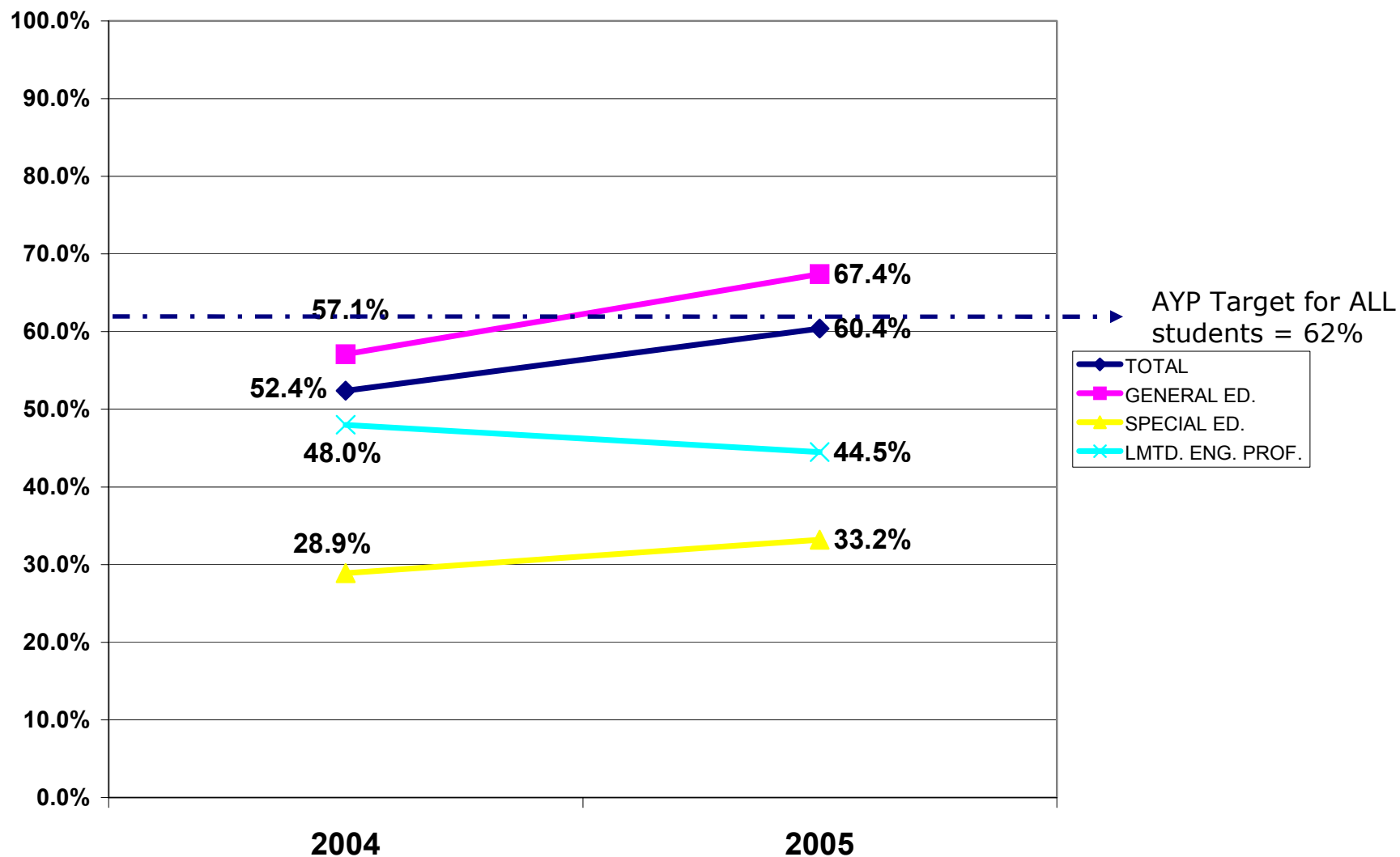
English Language Learners: Top Languages Spoken



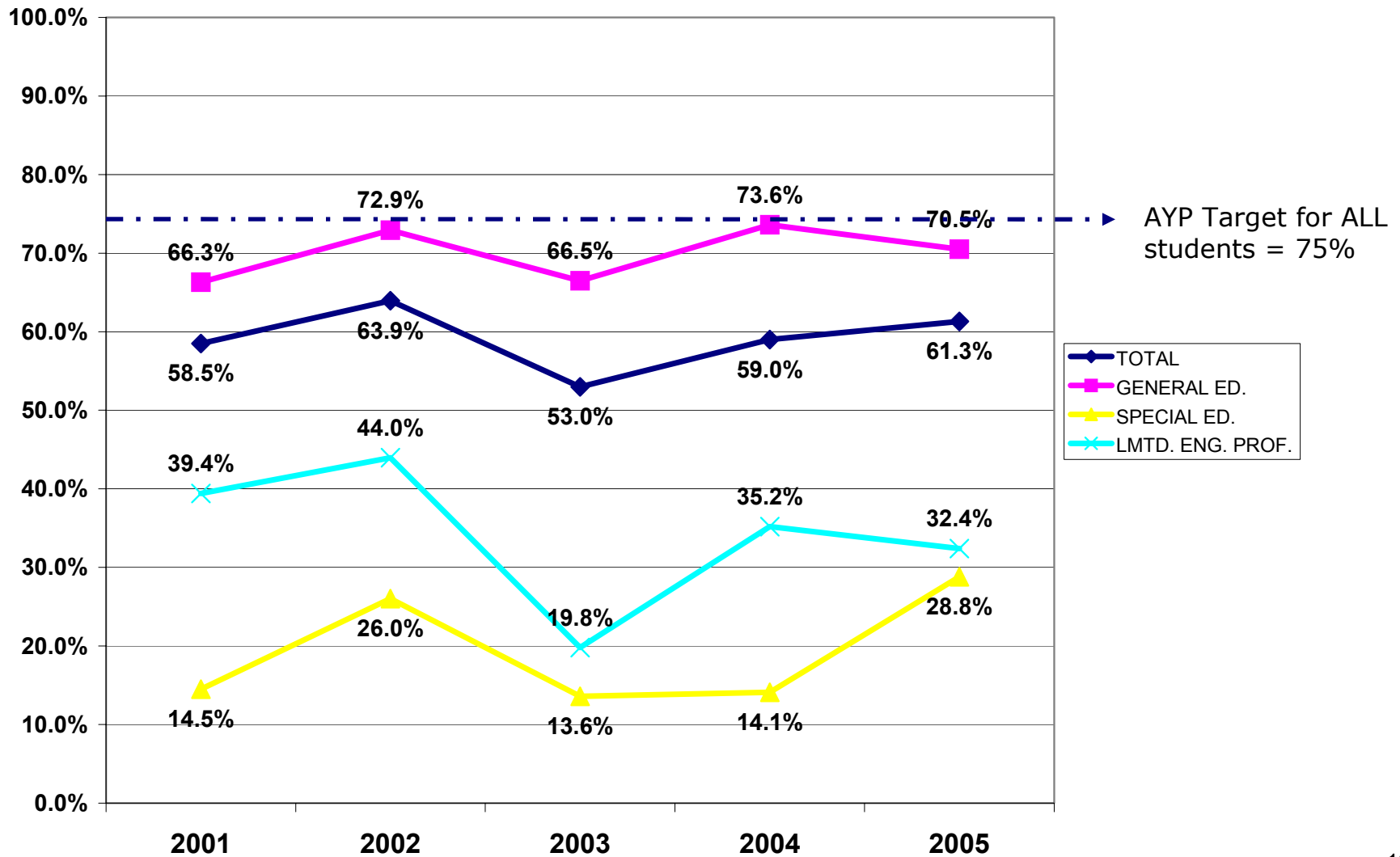
NJ ASK3 – Language Arts Literacy



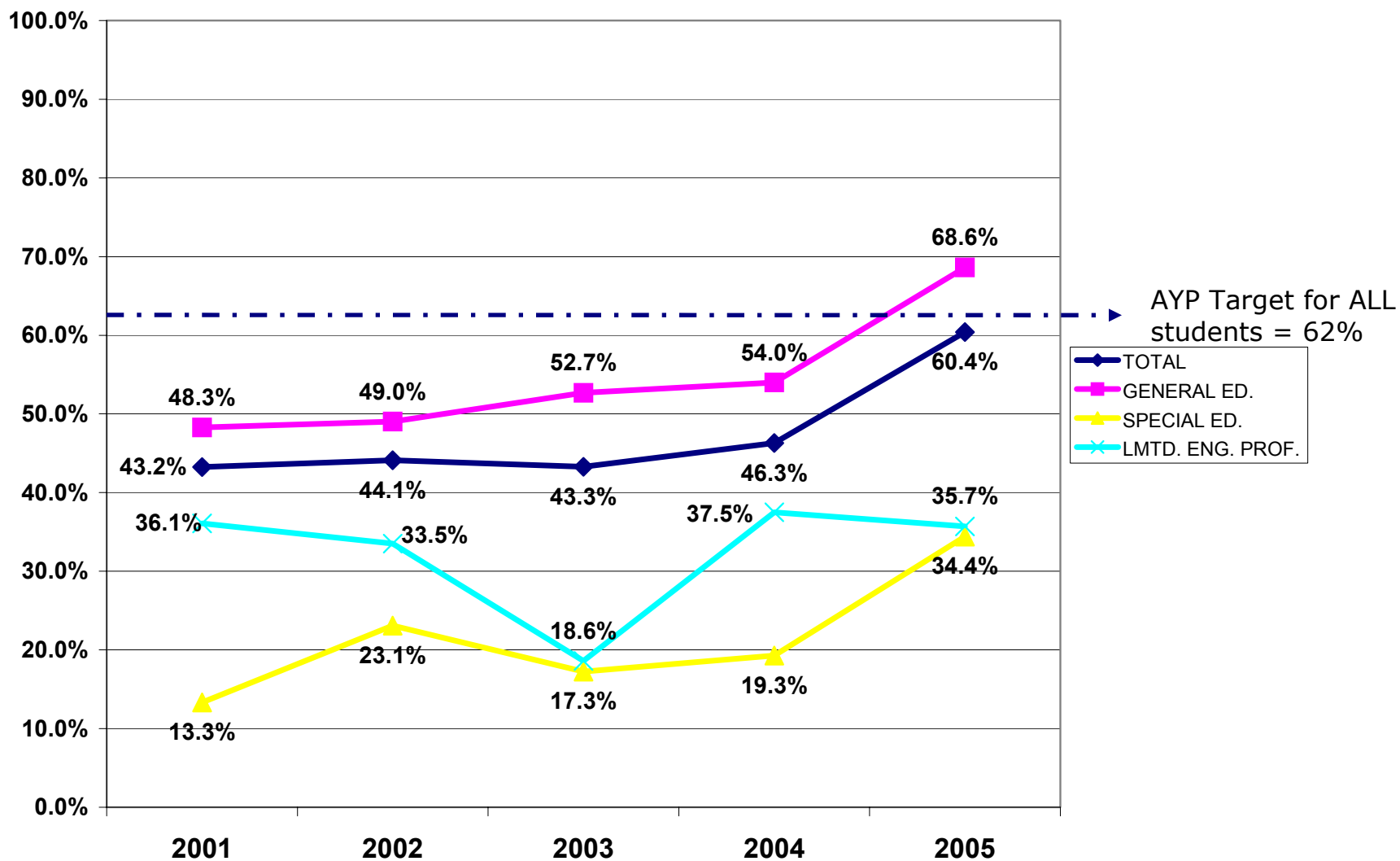
NJ ASK3 – Mathematics



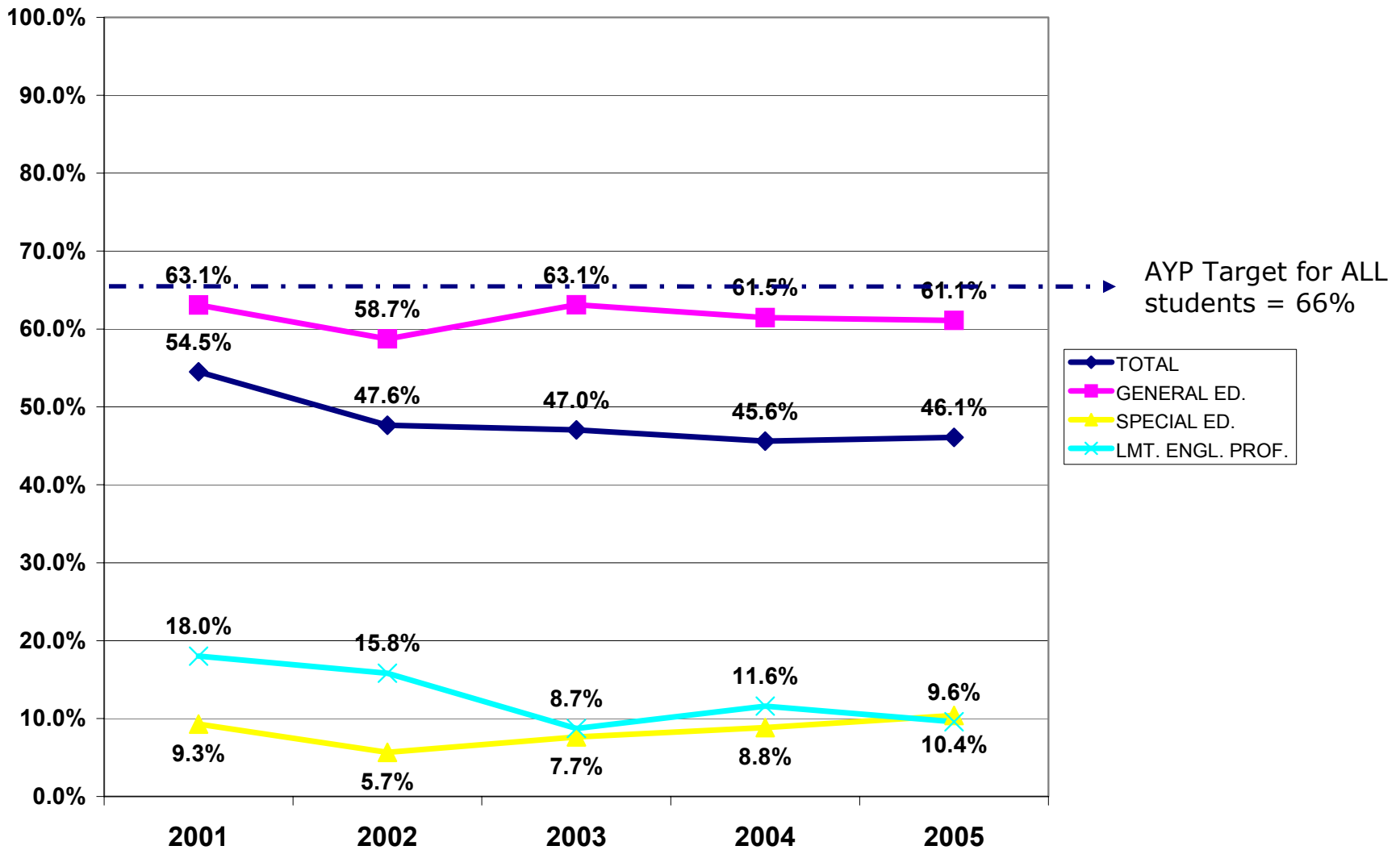
NJ ASK4 – Language Arts Literacy



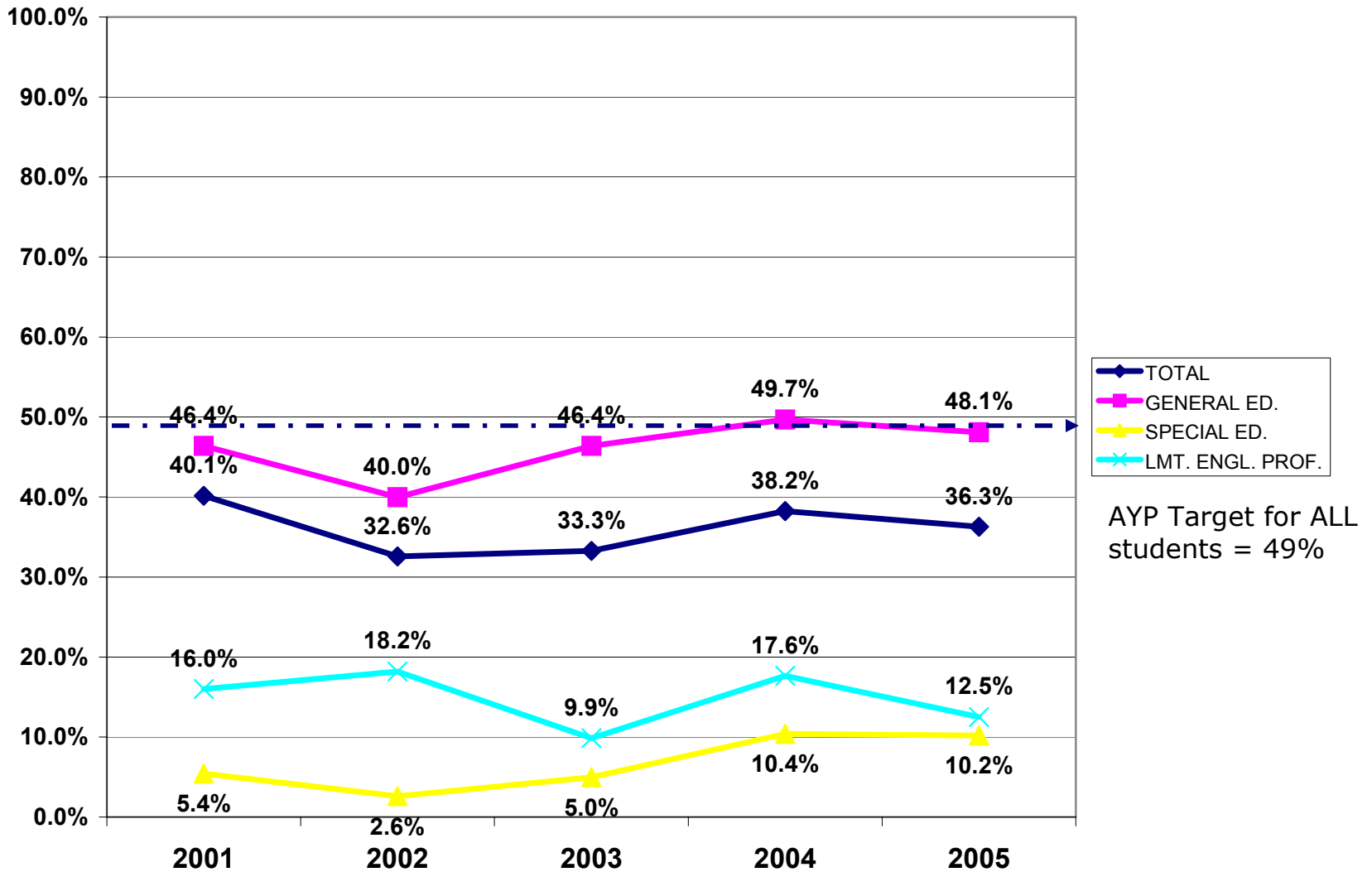
NJ ASK4 – Mathematics



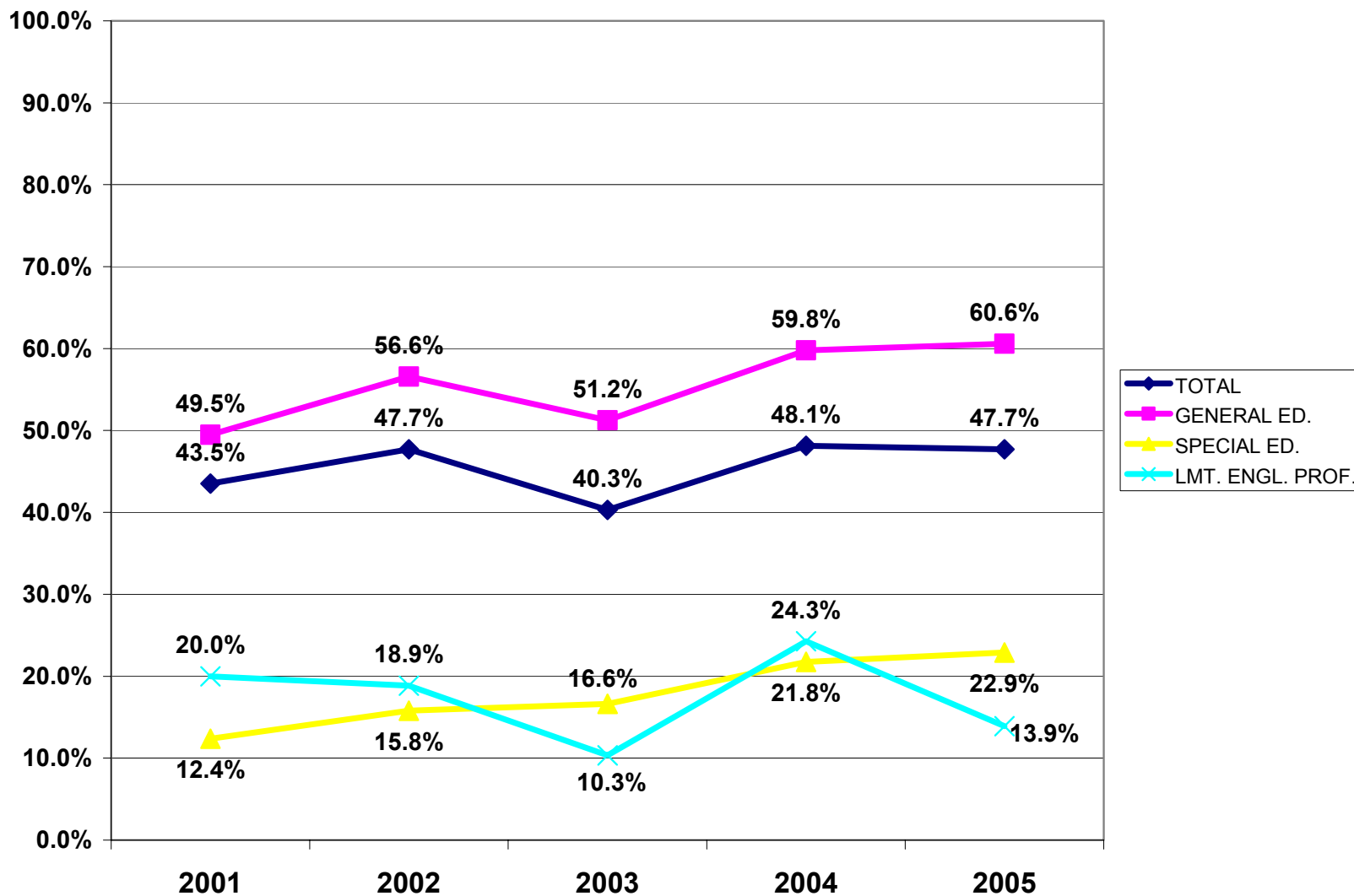
GEPA – Language Arts Literacy



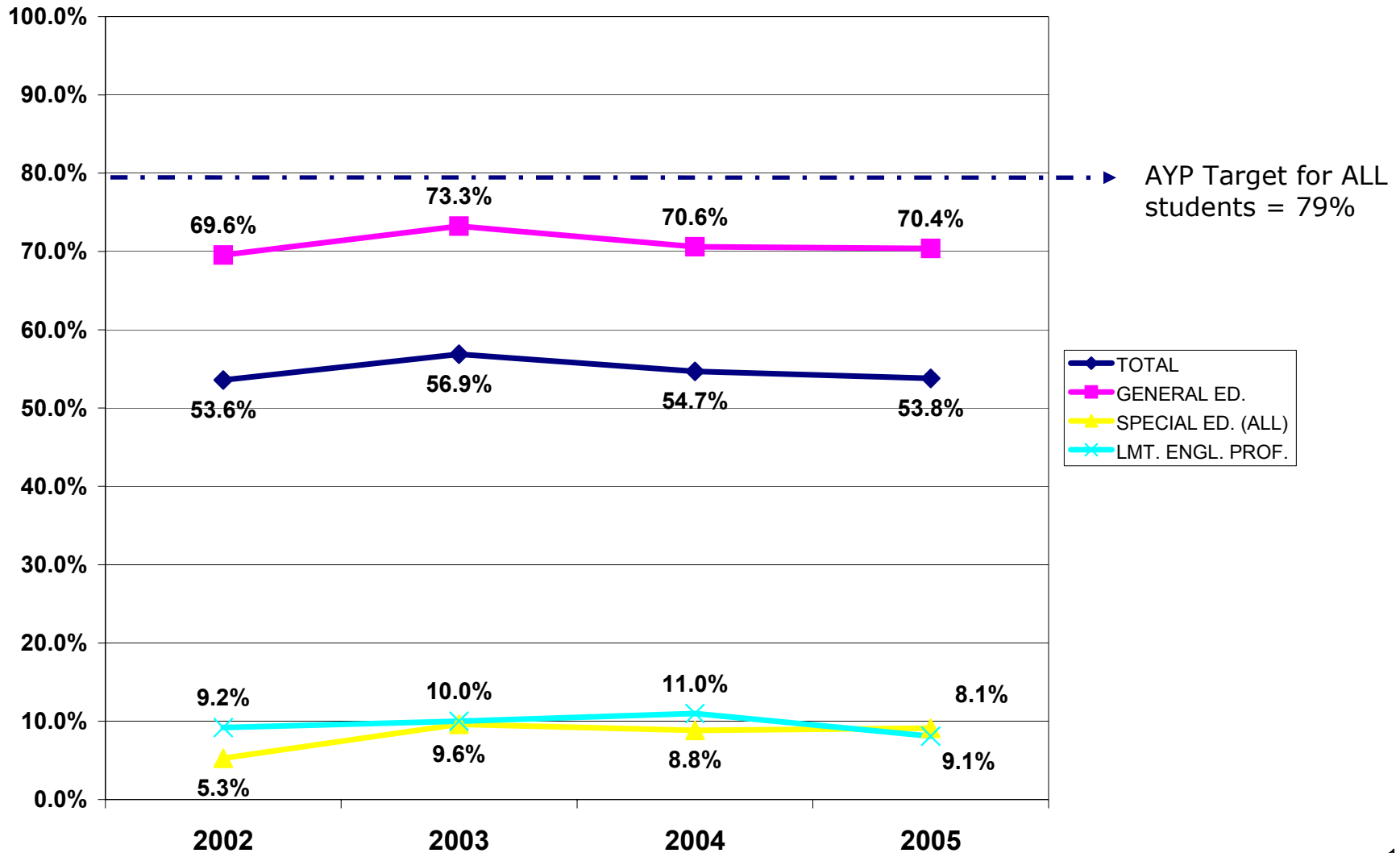
GEPA – Mathematics



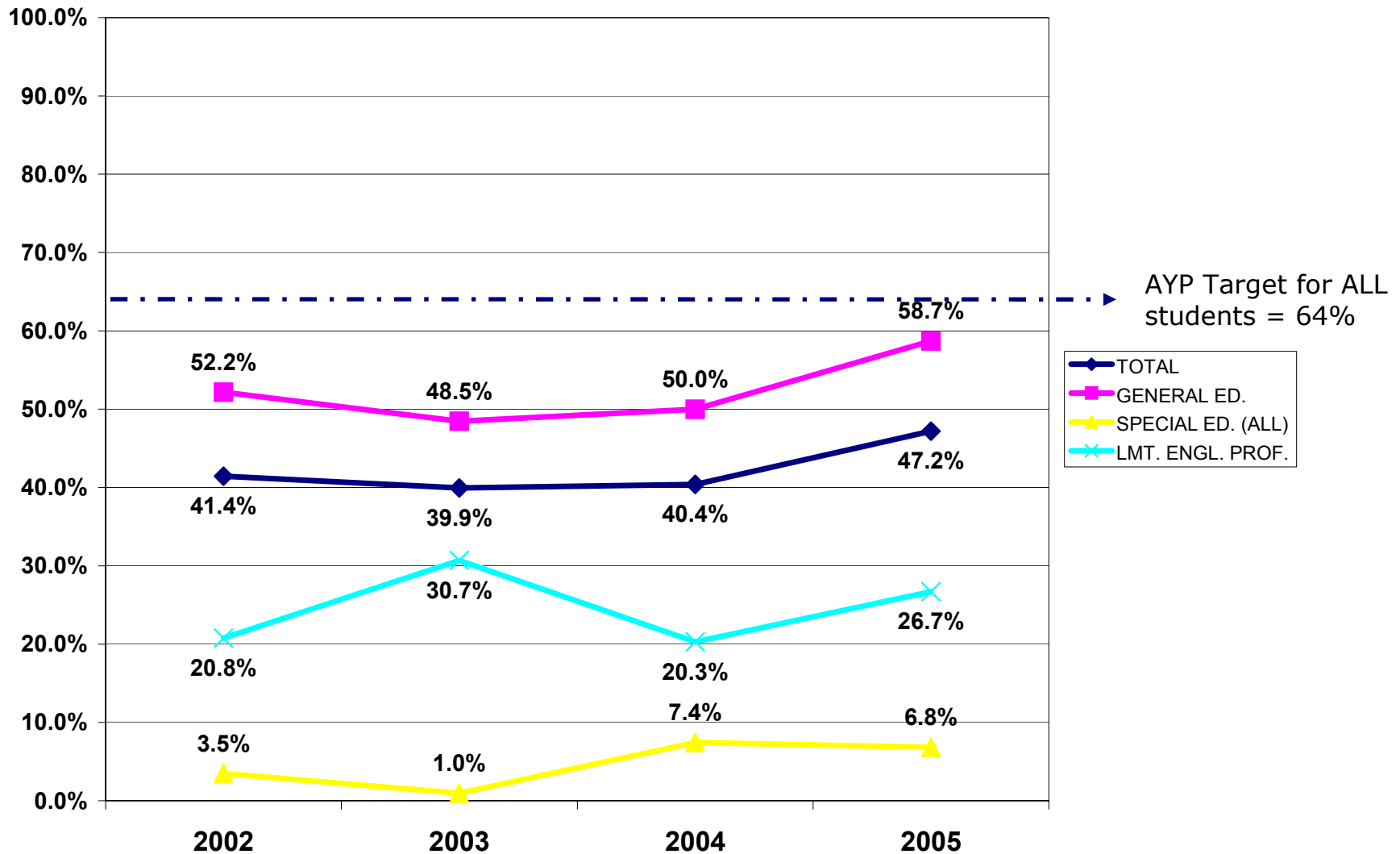
GEPA – Science



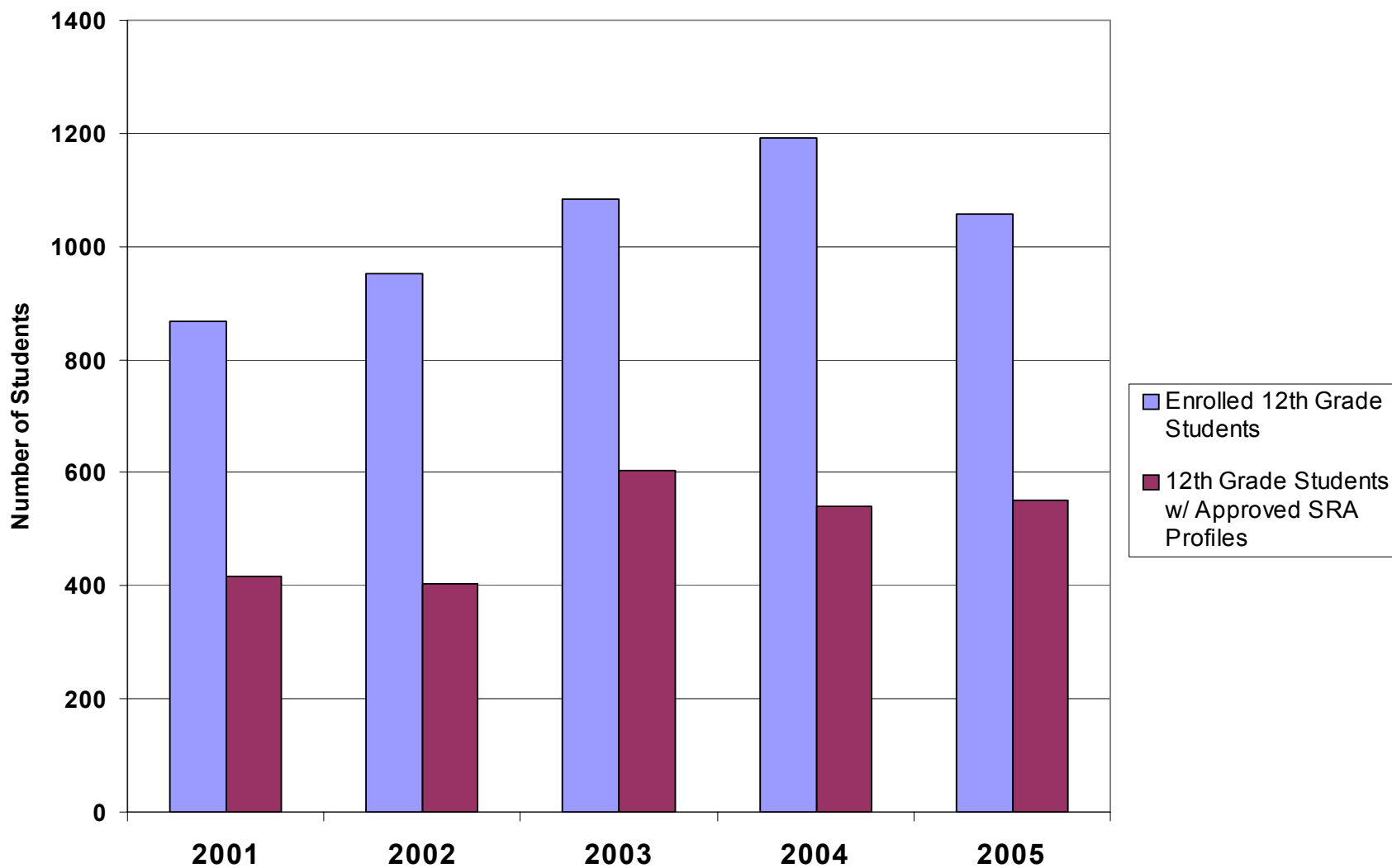
HSPA – Language Arts Literacy



HSPA – Mathematics



SRA in Paterson



Early Childhood Education

Enrollment						
	2000	2001	2002	2003	2004	2005
3 year olds	767	1116	1432	1527	1580	1597
4 year olds	995	1241	1697	1802	1849	1927
Kindergarten	1970	2014	2044	2088	2059	2043

Preschool Centers (Community Providers)						
	2000	2001	2002	2003	2004	2005
Number of Centers	26	33	43	44	39	40

Early Childhood Education Initiatives

- Early Learning Assessment System: Portfolio-based performance assessment measuring students emerging literacy skills
- Creative Curriculum: Goals and Objectives in four domains: Cognitive, Language, Physical and Social/Emotional
- Growing with Mathematics: Logical/Reasoning Skills Program
- PreK-K Transition Process: Communicates key student information to kindergarten teachers
- Professional Development: Includes teachers and aides

Elementary Education Initiatives

- Continuing to align the Language Arts Literacy and Mathematics curricula with NJCCCS
- Creation of Instructional Improvement Team in every elementary school: Facilitators, Language Arts & Math Coaches
- Establish 90-Minute Uninterrupted Language Arts and Mathematics Literacy Blocks

Elementary Education Initiatives (cont.)

- Scheduling to Support Staff Development and Collaboration

- Co-teaching for Academic Support

- New Textbooks, Materials, and Technology

- Expansion of Paterson Assessment System
 - Screening, Formative, Diagnostic, & Summative

Secondary Education

- Long Range Facility Plan Implications
 - Formation of high school campuses
 - Restructuring of comprehensive high schools
 - Career Learning Academies located within the comprehensive high schools
 - Career Learning Academies as off-site campuses

Secondary Education

- Abbott Secondary Education Initiative
 - District Planning Team selected
 - Subcommittees created to address four goals
 - Goal 1 – Create Small Learning Communities
 - Goal 2 – Provide Academic Rigor
 - Goal 3 – Create Family Advocacy and Personalization
 - Goal 4 – Provide Professional Development for staff

District-wide Professional Development

- Literacy Initiative Training
 - Coaching Model
- Leadership Training
 - Literacy Initiative
 - Instructional Teaming
- Additional Staff Development
 - On-site Literacy Support
 - Assessment Literacy Institute
 - Novice Principal Mentoring

Organizational Leadership

- Reorganization
 - Creation of Curriculum and Instruction Department
 - Provide direct support to Principals and schools
- Leadership Development
 - Programs to identify and nurture emerging leaders
 - Creation of leadership academies

Professional Partnerships

- Broad Education Foundation
- Stupski Foundation
- Coalition of Essential Schools
- PEF (Paterson Education Fund):



New Outreach Initiatives

- Community Advisory Committee
- Paterson Leadership Alliance
- Community Zone Meetings
- Telephone Notification System
- Redesign website, newsletter, & district local access television channel

Long Range Facilities Plan

- Collaborative effort between Paterson Public Schools and NJDOE Facility's Division
- Continuously updating and improving the long range facilities plan to meet the needs of the district

Paterson Public Schools

State District Superintendent
Dr. Michael E. Glascoe