

SUPPLEMENTAL ESL II



Unit 2

Course Description *(Workshop Model)*

Supplemental English as a Second Language consists of developing reading, writing, speaking, and listening skills. ESL teachers will use the appropriate leveled language objectives to build lessons for ELLs, which reflects what is covered in the general education program. In this way, all teachers work on the same New Jersey Student Learning Standards. The design of language objectives are based on the alignment of the World-Class Instructional Design Assessment (WIDA) Consortium’s English Language Development (ELD) standards with the New Jersey Student Learning Standards (NJSLS). WIDA’s ELD standards advance academic language development across content areas, ultimately leading to academic achievement for English learners. As English learners are progressing through the six developmental linguistic stages, this course will assist all teachers working with English learners to appropriately identify the language needed to meet the requirements of the content standard. At the same time, the language objectives recognize the cognitive demand required to complete educational tasks. The teachers will instruct students using the workshop model philosophy with the use of the “I DO, WE DO, YOU DO” method of instruction. Other skills such as grammar, vocabulary, listening, and speaking are infused in the exploration of effective reading and writing. The New Jersey Student Learning Standards are designed to provide a clear understanding of what students are expected to learn, providing teachers and parents the knowledge of what they need to do to help them. The standards are designed to be robust and relevant to the real world, reflecting the information and skills that our young learners need for success in college and careers. It is our goal to establish a community of learners to become productive citizens in society striving towards pursuing their life-long goals. Through an enriching and rigorous education and with on-going support, our students will be fully prepared for the future to compete successfully in the global economy.

Pacing Chart – Unit 2

Pacing Chart – Unit 2			
	Student Learning Standards	NJSLs:	
1	Cite strong and thorough textual evidence to support analysis of what the text says explicitly as well as inferences drawn from the text.	ELA-Literacy.RI.9-12.1	Frontloading: 1 week Instruction: 6 weeks Assessment: 1 week Remediation/Enrichment: 1 week
2	Demonstrate command of the conventions of standard English grammar and usage when writing or speaking.	ELA-Literacy.L.9-12.1	
3	Use parallel structure.	ELA-LITERACY.L.9-12.1.A	
4	Determine or clarify the meaning of unknown and multiple-meaning words and phrases based on <i>grades 9-10 reading and content</i> , choosing flexibly from a range of strategies.	ELA-LITERACY.L.9-12.4	
5	Use context (e.g., the overall meaning of a sentence, paragraph, or text; a word's position or function in a sentence) as a clue to the meaning of a word or phrase.	ELA-LITERACY.L.9-12.4.A	
6	Consult general and specialized reference materials (e.g., dictionaries, glossaries, thesauruses), both print and digital, to find the pronunciation of a word or determine or clarify its precise meaning, its part of speech, or its etymology.	ELA-LITERACY.L.9-12.4.C	
7	Demonstrate command of the conventions of standard English capitalization, punctuation, and spelling when writing.	ELA-Literacy.L.9-12.2	
8	Apply knowledge of language to understand how language functions in different contexts, to make effective choices for meaning or style, and to comprehend more fully when reading or listening.	ELA-LITERACY.L.9-12.3	
9	Initiate and participate effectively in a range of collaborative discussions (one-on-one, in groups, and teacher-led) with diverse partners on grades 9-10 topics, texts, and issues, building on others' ideas and expressing their own clearly and persuasively.	ELA-Literacy.SL.9-12.1	
10	Adapt speech to a variety of contexts and tasks, demonstrating command of formal English when indicated or appropriate.	ELA-Literacy.SL.9-12.6	

Effective Pedagogical Routines/Instructional Strategies

<p>Collaborative problem solving</p> <p>Writing to learn</p> <p>Making thinking visible</p> <p>Note-taking</p> <p>Rereading & rewriting</p> <p>Establishing text-based norms for discussions & writing</p> <p>Establishing metacognitive reflection & articulation as a regular pattern in learning</p> <p>Quick Writes</p> <p>Pair/trio sharing</p> <p>Turn and Talk</p> <p>Charting</p> <p>Gallery Walks</p> <p>Whole class discussions</p> <p>Modeling</p>	<p>Word Study Drills</p> <p>Flash cards</p> <p>Interviews</p> <p>Role playing</p> <p>Diagrams, charts and graphs</p> <p>Storytelling</p> <p>Coaching</p> <p>Reading partners</p> <p>Visuals</p> <p>Reading Aloud</p> <p>Model (I Do), Guided Practice (We Do), Independent Practice (You Do)</p> <p>Mind Mapping</p> <p>Trackers</p> <p>Multiple Response Strategies</p> <p>Choral reading</p> <p>Reader's/Writer's Notebooks</p>
---	---

Educational Technology Standards

8.1.12.A.1, 8.1.12.A.2, 8.1.12.B.2, 8.1.12.C.1, 8.1.12.D.1, 8.1.12.D.2, 8.1.12.D.3, 8.1.12.E.1, 8.1.12.F.1

➤ **Technology Operations and Concepts**

- Create a personal digital portfolio which reflects personal and academic interests, achievements, and career aspirations by using a variety of digital tools and resources
- Produce and edit a multi-page digital document for a commercial or professional audience and present it to peers and/or professionals in that related area for review.

➤ **Creativity and Innovation**

- Apply previous content knowledge by creating and piloting a digital learning game or tutorial.

➤ **Communication and Collaboration**

- Develop an innovative solution to a real world problem or issue in collaboration with peers and experts, and present ideas for feedback through social media or in an online community.

➤ **Digital Citizenship**

- Demonstrate appropriate application of copyright, fair use and/or Creative Commons to an original work.
- Evaluate consequences of unauthorized electronic access and disclosure, and on dissemination of personal information.
- Compare and contrast policies on filtering and censorship both locally and globally.

➤ **Research and Information Literacy**

- Produce a position statement about a real world problem by developing a systematic plan of investigation with peers and experts synthesizing information from multiple sources.

➤ **Critical Thinking, Problem Solving, Decision Making**

- Evaluate the strengths and limitations of emerging technologies and their impact on educational, career, personal and or social needs.

Computer Skills

➤ **Keyboarding - Demonstrate mastery of:**

- Home Row
- Upper Row and Lower Row
- Number Row
- Shift Key

➤ **Basic Computer Skills – Demonstrate mastery of:**

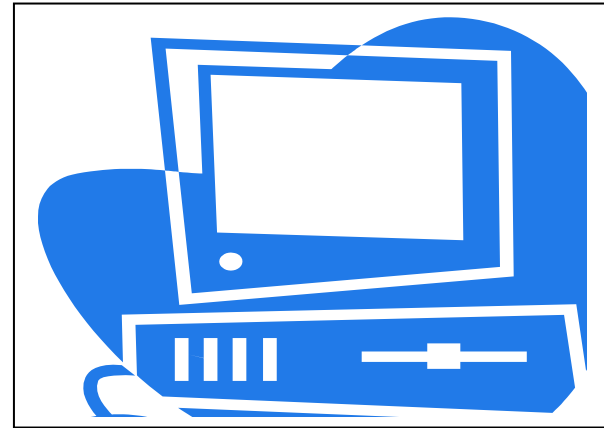
- Acceptable Use Policies
- Symbols of Technology
- Dramatic Digital Video
- Printer and Scanner
- Identifying Computer Devices
- Audience and Media

➤ **Word Processing- Demonstrate mastery of:**

- Creating and Organizing Content
- Revising, Formatting, Proofreading, and Editing
- Page Layout and Desktop Publishing
- Copy, Cut, and Paste
- Insert Clip Art, Columns, and Chart/Table
- Headers/Footers
- Bold/Alignment

➤ **Stamina - In accordance with [NJSLA-ELA-Literacy.W.8.6](#)**

- Use technology, including the Internet, to produce and publish writing and **present relationships between information and ideas efficiently** as well as to interact and collaborate with others.



Career Ready Practices

Career Ready Practices describe the career-ready skills that all educators in all content areas should seek to develop in their students. They are practices that have been linked to increase college, career, and life success. Career Ready Practices should be taught and reinforced in all career exploration and preparation programs with increasingly higher levels of complexity and expectation as a student advances through a program of study.

- **CRP1.** Act as a responsible and contributing citizen and employee.
- **CRP2.** Apply appropriate academic and technical skills.
- **CRP3.** Attend to personal health and financial well-being.
- **CRP4.** Communicate clearly and effectively and with reason.
- **CRP5.** Consider the environmental, social and economic impacts of decisions.
- **CRP6.** Demonstrate creativity and innovation.
- **CRP7.** Employ valid and reliable research strategies.
- **CRP8.** Utilize critical thinking to make sense of problems and persevere in solving them.
- **CRP9.** Model integrity, ethical leadership and effective management.
- **CRP10.** Plan education and career paths aligned to personal goals.
- **CRP11.** Use technology to enhance productivity.
- **CRP12.** Work productively in teams while using cultural global competence.

WIDA Proficiency Levels

At the given level of English language proficiency, English language learners will process, understand, produce or use:

6- Reaching	<ul style="list-style-type: none"> • Specialized or technical language reflective of the content areas at grade level • A variety of sentence lengths of varying linguistic complexity in extended oral or written discourse as required by the specified grade level • Oral or written communication in English comparable to proficient English peers
5- Bridging	<ul style="list-style-type: none"> • Specialized or technical language of the content areas • A variety of sentence lengths of varying linguistic complexity in extended oral or written discourse, including stories, essays or reports • Oral or written language approaching comparability to that of proficient English peers when presented with grade level material.
4- Expanding	<ul style="list-style-type: none"> • Specific and some technical language of the content areas • A variety of sentence lengths of varying linguistic complexity in oral discourse or multiple, related sentences or paragraphs • Oral or written language with minimal phonological, syntactic or semantic errors that may impede the communication, but retain much of its meaning, when presented with oral or written connected discourse, with sensory, graphic or interactive support
3- Developing	<ul style="list-style-type: none"> • General and some specific language of the content areas • Expanded sentences in oral interaction or written paragraphs • Oral or written language with phonological, syntactic or semantic errors that may impede the communication, but retain much of its meaning, when presented with oral or written, narrative or expository descriptions with sensory, graphic or interactive support
2- Beginning	<ul style="list-style-type: none"> • General language related to the content area • Phrases or short sentences • Oral or written language with phonological, syntactic, or semantic errors that often impede of the communication when presented with one to multiple-step commands, directions, or a series of statements with sensory, graphic or interactive support
1- Entering	<ul style="list-style-type: none"> • Pictorial or graphic representation of the language of the content areas • Words, phrases or chunks of language when presented with one-step commands directions, WH-, choice or yes/no questions, or statements with sensory, graphic or interactive support

Differentiated Instruction

Accommodate Based on Students Individual Needs: Strategies

<p><u>Time/General</u></p> <ul style="list-style-type: none"> • Extra time for assigned tasks • Adjust length of assignment • Timeline with due dates for assignments and projects • Communication system between home and school • Provide lecture notes/outline 	<p><u>Processing</u></p> <ul style="list-style-type: none"> • Extra response time • Have students verbalize steps • Repeat, clarify or reword directions • Mini-breaks between tasks • Provide a warning for transitions • Reading partners 	<p><u>Comprehension</u></p> <ul style="list-style-type: none"> • Precise step-by-step directions • Short manageable tasks • Brief and concrete directions • Provide immediate feedback • Small group instruction • Emphasize multi-sensory learning 	<p><u>Recall</u></p> <ul style="list-style-type: none"> • Teacher-made checklist • Use visual graphic organizers • Reference resources to promote independence • Visual and verbal reminders • Graphic organizers
<p><u>Assistive Technology</u></p> <ul style="list-style-type: none"> • Computer/whiteboard • Tape recorder • Spell-checker • Audio-taped books 	<p><u>Tests/Quizzes/Grading</u></p> <ul style="list-style-type: none"> • Extended time • Study guides • Shortened tests • Read directions aloud 	<p><u>Behavior/Attention</u></p> <ul style="list-style-type: none"> • Consistent daily structured routine • Simple and clear classroom rules • Frequent feedback 	<p><u>Organization</u></p> <ul style="list-style-type: none"> • Individual daily planner • Display a written agenda • Note-taking assistance • Color code materials

Interdisciplinary Connections

History: City and Transportation

- Students research the history of the city and transportation. The information gathered will be used to create an end of unit project.

Social Studies: Paterson and City Transportation

- Students will be exposed to the city of Paterson and its transportation services. Students will use information gained to discuss their lives and descriptions of their city and neighborhoods.

Economics: City and Transportation

- Discussions regarding the city and transportation can lead to discussion regarding how this directly and indirectly affects income and spending for families.

Geography/Math: Maps of the City

- Reviewing and discussing maps of the City of Paterson would expose the students to the geography of the city and can be extended further. The discussion may include distances between location and time of travel comparison utilizing different forms of transportation.

Enrichment

The goal of Enrichment is to provide learners the opportunity to participate in extension activities that are differentiated and augment the district's curriculum. Teachers are to accommodate based on student individual needs.

Seeking to build each learner's capacity to do the following:

- Show a high degree of intellectual, creative and/or artistic ability and demonstrate this ability in multiple ways.
- Pose questions and exhibit sincere curiosity about principles and how things work.
- The ability to grasp concepts and make real world and cross-curricular connections.
- Generate theories and hypotheses and pursue methods of inquiry.
- Produce products that express insight, creativity, and excellence.
- Possess exceptional leadership skills.
- Evaluate vocabulary
- Elevate Text Complexity
- Inquiry based assignments and projects
- Independent student options
- Tiered/Multi-level activities
- Purposeful Learning Center

- Open-ended activities and projects
- Form and build on learning communities
- Providing pupils with experiences outside the 'regular' curriculum
- Altering the pace the student uses to cover regular curriculum in order to explore topics of interest in greater depth/breadth within their own grade level.
- A higher quality of work than the norm for the given age group.
- The promotion of a higher level of thinking and making connections.
- The inclusion of additional subject areas and/or activities (cross-curricular).
- Using supplementary materials in addition to the normal range of resources.

Assessments

Required District/State Assessments

- NJDOE Model Curriculum End of Unit Assessment
(Students with CPL \geq 3.5)
- ESL Unit End of Unit Assessment
(Students with CPL \leq 3.4)
- W-APT oral language proficiency test / ACCESS
- PARCC

Suggested Formative/Summative Classroom Assessments

- Short constructed response questions
- Multiple Choice questions
- Academic/Domain specific vocabulary
- Quizzes
- Journals
- Essays
- Quick writes
- Summative chapter test
- Accountable talk
- Projects
- Portfolio
- Observation
- Exit Slips
- Graphic Organizers
- Presentations (incorporating Web 2.0 tools)
- Homework
- Role Playing
- Concept Mapping
- Student Conferencing

Grades: 9-12	Unit: 2 Level 2-2.9	Topic: City and Transportation	
NJSLS: RI.9.1, L.9.1, L.9.1.A, L.9.4, L.9.4.A, L.9.4.C, L.9.2, L.9.3, SL.9.1, SL.9.6	NJSLS: RI.10.1, L.10.1, L.10.1.A, L.10.4, L.10.4.A, L.10.4.C, L.10.2, L.10.3, SL.10.1, SL.10.6	NJSLS: RI.11.1, L.11.1, L.11.1.A, L.11.4, L.11.4.A, L.11.4.C, L.11.2, L.11.3, SL.11.1, SL.11.6	NJSLS: RI.12.1, L.12.1, L.12.1.A, L.12.4, L.12.4.A, L.12.4.C, L.12.2, L.12.3, SL.12.1, SL.12.6
WIDA Standards: 1-5 Listening, Speaking, Reading & Writing			

New Jersey Student Learning Standards (NJSLS)	Language Objective	Essential Questions	Sample Activities	Resources
ELA-Literacy.RI.9-12.1 Cite strong and thorough textual evidence to support analysis of what the text says explicitly as well as inferences drawn from the text.	ELA-Literacy.RI.9-12.1 Use adjectives and descriptors to determine the location on a map.	<ul style="list-style-type: none"> • What information from the text helps you determine where something is taking place? • How can the text provide you with information regarding location? 	(9-10) Students are given a text to read and locations on a map. Based on the description of the location students choose the location being described. (11-12) Students are given a map and choose a location on the map. Students will write a brief description about the location and have the class choose the location being described	<i>Place nouns</i> http://www.englishdaily626.com/places.php Maps/Neighborhood http://www.eslflow.com/citycountryfollowingdirections.html
ELA-Literacy.L.9-12.1 Demonstrate command of the conventions of	ELA-Literacy.L.9-12.1 Demonstrate command of the conventions of standard English	<ul style="list-style-type: none"> • What is the purpose of a clause in a sentence? 	(9-10) Place clauses in order to create sentences. Correct capitalization errors in a text. (11-12) Place words in order to	<i>How to teach present continuous</i> http://busyteacher.org/3715-how-to-teach-

New Jersey Student Learning Standards (NJSLS)	Language Objective	Essential Questions	Sample Activities	Resources
standard English grammar and usage when writing or speaking.	grammar and usage when writing and/or speaking.		create sentences. Correct capitalization error	the-present-continuous-tense.html <i>Worksheet</i> http://busyteacher.org/17002-present-simple-vs-present-continuous-worksheet.html
ELA-LITERACY.L.9-12.1.A Use parallel structure.	ELA-LITERACY.L.9-12.1.A Use parallel structure. To understand proper usage of target grammar.	<ul style="list-style-type: none"> How can we use parallel structure to write using proper grammar of target? Why is it important to have parallel structure in grammar? 	(9-10) Use the same pattern of words to show that two or more ideas have the same level of importance at the word level. (11-12) Use the same pattern of words to show that two or more ideas have the same level of importance at the phrasal level.	<i>Present continuous affirmative vs negative</i> http://www.inglestotal.com/wp-content/uploads/2014/06/present-continuous-exercises.pdf
ELA-LITERACY.L.9-12.4 Determine or clarify the meaning of unknown and multiple-meaning words and phrases based on <i>grade</i>	ELA-LITERACY.L.9-12.4 Determine or clarify the meaning of unknown and multiple-meaning words and phrases based on <i>reading and content</i> .	<ul style="list-style-type: none"> How can we determine the meaning of words? Why are context clues important? How can other words from the text help us determine the meaning 	(9-10) Identify the context clues in the text. (11-12) Identify the context clues from the text. Cite supporting text to confirm ideas.	<i>How to teach Context clues</i> http://powerupwhatworks.org/strategy-guide/context-clues <i>Work Sheets</i> http://www.ereadingw

New Jersey Student Learning Standards (NJSLS)	Language Objective	Essential Questions	Sample Activities	Resources
<i>level content.</i>		of a word or phrase?		orksheets.com/figurative-language/figurative-language-worksheets/
<p>ELA-LITERACY.L.9-12.4.A</p> <p>Use context (e.g., the overall meaning of a sentence, paragraph, or text; a word's position or function in a sentence) as a clue to the meaning of a word or phrase.</p>	<p>ELA-LITERACY.L.9-12.4.A</p> <p>Use context (e.g., the overall meaning of a sentence, paragraph, or text; a word's position or function in a sentence) as a clue to the meaning of a word or phrase.</p>	<ul style="list-style-type: none"> • How does the overall meaning of a sentence or paragraph help us determine the meaning of a word? • How is the vocabulary word being used in the text? 	<p>(9-10) Determine the meaning of words via relative vocabulary words used.</p> <p>(11-12) Determine the meaning of words via sentences used by author.</p>	<p><i>Using contextual evidence</i></p> <p>http://powerupwhatworks.org/strategy-guide/context-clues</p>
<p>ELA-LITERACY.L.9-12.4.C</p> <p>Consult general and specialized reference materials (e.g., dictionaries, glossaries, thesauruses), both print and digital, to find the</p>	<p>ELA-LITERACY.L.9-12.4.C</p> <p>Consult general and specialized reference materials (e.g., dictionaries, glossaries, thesauruses), both print and digital, to find the pronunciation of a word</p>	<ul style="list-style-type: none"> • How does understanding the dictionary affect how I understand English? • How does independent understanding help me become a lifelong learner? 	<p>(9-10) As students hear the clues, they look for the word in the dictionary until they have narrowed it down to just one.</p> <p>(11-12) Students use clues from the text and the look for the meaning of a word. The clues are broader and many words could be a correct answer.</p>	<p><i>Google translate</i></p> <p>https://translate.google.com/</p> <p><i>Webster's dictionary</i></p> <p>http://www.merriam-webster.com/</p>

New Jersey Student Learning Standards (NJSLS)	Language Objective	Essential Questions	Sample Activities	Resources
pronunciation of a word or determine or clarify its precise meaning, its part of speech, or its etymology.	or determine or clarify its precise meaning, its part of speech, or its etymology			
<p>ELA-Literacy.L.9-12.2</p> <p>Demonstrate command of the conventions of standard English capitalization, punctuation, and spelling when writing.</p>	<p>ELA-Literacy.L.9-12.2</p> <p>Demonstrate command of the conventions of standard English capitalization, punctuation, and spelling when writing.</p>	<ul style="list-style-type: none"> • How can you identify and correctly place prepositional phrases in sentences? • What is the purpose of time-order or transitional words in writing? 	<p>(9-12) Students analyze a set of pictures of the city and transportation and write an essay appropriately using prepositional phrases, time-order words and transitional words to explain how the city and/or transportation has changed over time.</p>	<p><i>Sequencing words</i></p> <p>http://www.eslgold.com/speaking/giving_instructions.html</p>
<p>ELA-LITERACY.L.9-12.3</p> <p>Apply knowledge of language to understand how language functions in different contexts, to make effective choices for meaning or style, and to comprehend</p>	<p>ELA-LITERACY.L.9-12.3</p> <p>Apply knowledge of language to understand how language functions in different contexts, to make effective choices for meaning or style, and to comprehend more</p>	<ul style="list-style-type: none"> • Why is it important to understand how language functions in different context? • How can you make effective choices for meaning when reading or listening by using 	<p>(9-10) In groups, students role play teacher created dialogue situations using target grammar.</p> <p>(11-12) In groups students create role play situations in which target grammar can be used.</p>	<p><i>Role play worksheets</i></p> <p>http://www.eslkidsworld.com/worksheets/role%20plays/</p>

New Jersey Student Learning Standards (NJSLS)	Language Objective	Essential Questions	Sample Activities	Resources
more fully when reading or listening.	fully when reading or listening.	language functions?		
<p>ELA-Literacy.SL.9-12.1</p> <p>Initiate and participate effectively in a range of collaborative discussions (one-on-one, in groups, and teacher-led) with diverse partners on grades level topics, texts, and issues, building on others' ideas and expressing their own clearly and persuasively.</p>	<p>ELA-Literacy.SL.9-12.1</p> <p>Initiate and participate effectively in a range of collaborative discussions (one-on-one, in groups, and teacher-led) with diverse partners on grades level topics, texts, and issues, building on others' ideas and expressing their own clearly and persuasively.</p>	<ul style="list-style-type: none"> • Why is it important to prepare for discussion? • How can you best prepare for discussions on a given topic? • In what ways can you respond thoughtfully to diverse perspectives during discussions? 	<p>(9-10) Using a city map previously created by students, they listen to each other share their maps and participate in discussions relating to the maps. Students are assessed based on successful completion of listening and participation.</p> <p>(11-12) In pairs, students discuss their previously created maps.</p>	<p><i>Interview Sheets.</i></p> <p>http://writing.colostate.edu/guides/teaching/esl/esl_intake_sample.cfm</p> <p><i>Giving Directions map</i></p> <p>http://busyteacher.org/21437-game-secret-code-directions.html</p>

New Jersey Student Learning Standards (NJSLS)	Language Objective	Essential Questions	Sample Activities	Resources

Unit Vocabulary	
<p> adjective noun map capitalization explicit infer uncertain compound tenses (would have been) elements of quotations interact complex build on central idea clauses objective summary parallel structure affirmative negative interview discussion </p>	<p> transitional phrases context clues figurative compound tenses figurative language resolution conclusion word order tense and aspect purpose audience writing tasks author’s purpose writing tasks dictionary glossary thesaurus dialogue style </p>

--	--

Unit Project (Choose 1)

Project 1 (Suggested)	Project 2 (Suggested)
<p>“How to” Presentation</p> <p>Instructions: Present an activity you like to do to in their city. Give instructions to the class on how to perform this activity.</p> <p>Description: Students choose an activity to demonstrate to the class. Students will be judged on effective use of target grammar and elements of speech, i.e. pronunciation, vocabulary.</p>	<p>Giving Directions</p> <p>Description Students analyze a map of a city (i.e. Manhattan, NY) within the united states. Using the map and available transit (i.e. bus, train) schedules students give directions to locations on the map. Students will be assessed on effectiveness of directions, use of vocabulary words, use of target grammar, and speaking skills.</p>

Speaking Rubric of the WIDA™ Consortium*

Speaking Rubric of the WIDA Consortium			
Task Level	Linguistic Complexity	Vocabulary Usage	Language Control
1 Entering	Single words, set phrases or chunks of memorized oral language	Highest frequency vocabulary from school setting and content areas	When using memorized language, is generally comprehensible; communication may be significantly impeded when going beyond the highly familiar
2 Emerging	Phrases, short oral sentences	General language related to the content area; groping for vocabulary when going beyond the highly familiar is evident	When using simple discourse, is generally comprehensible and fluent; communication may be impeded by groping for language structures or by phonological, syntactic or semantic errors when going beyond phrases and short, simple sentences
3 Developing	Simple and expanded oral sentences; responses show emerging complexity used to add detail	General and some specific language related to the content area; may grope for needed vocabulary at times	When communicating in sentences, is generally comprehensible and fluent; communication may from time to time be impeded by groping for language structures or by phonological, syntactic or semantic errors, especially when attempting more complex oral discourse
4 Expanding	A variety of oral sentence lengths of varying linguistic complexity; responses show emerging cohesion used to provide detail and clarity	Specific and some technical language related to the content area; groping for needed vocabulary may be occasionally evident	At all times generally comprehensible and fluent, though phonological, syntactic or semantic errors that don't impede the overall meaning of the communication may appear at times; such errors may reflect first language interference
5 Bridging	A variety of sentence lengths of varying linguistic	Technical language related to the content area; facility with needed	Approaching comparability to that of English proficient peers in terms of comprehensibility and fluency; errors

	complexity in extended oral discourse; responses show cohesion and organization used to support main ideas	vocabulary is evident	don't impede communication and may be typical of those an English proficient peer might make
--	---	------------------------------	---

Adapted from *ACCESS for ELLs® Training Toolkit and Test Administration Manuals, Series 103 (2007-08)*

*English proficiency level 6 is not included in the Speaking Rubric as it is reserved for students whose oral English is comparable to that of their English-proficient peers.

Writing Rubric of the WIDA Consortium (Grades 1-12)

Task Level	Linguistic Complexity	Vocabulary Usage	Language Control
1 Entering	Single words, set phrases or chunks of simple language; varying amounts of text may be copied or adapted; adapted text contains original language.	Usage of highest frequency vocabulary from school setting and content areas.	Generally comprehensible when text is copied or adapted from model or source text; comprehensibility may be significantly impeded in original text.
2 Emerging	Phrases and short sentences; varying amount of text may be copied or adapted; some attempt at organization may be evidenced.	Usage of general language related to the content area; lack of vocabulary may be evident.	Generally comprehensible when text is adapted from model or source text, or when original text is limited to simple text; comprehensibility may be often impeded by errors.
3 Developing	Simple and expanded sentences that show emerging complexity used to provide detail.	Usage of general and some specific language related to the content area; lack of needed vocabulary may be evident.	Generally comprehensible when writing in sentences; comprehensibility may from time to time be impeded by errors when attempting to produce more complex text.
4 Expanding	A variety of sentence lengths of varying linguistic complexity; emerging cohesion used to provide detail and clarity.	Usage of specific and some technical language related to the content area; lack of needed vocabulary may be occasionally evident.	Generally comprehensible at all times, errors don't impede the overall meaning; such errors may reflect first language interference.
5 Bridging	A variety of sentence lengths of varying linguistic complexity in a single organized paragraph or in extended text; cohesion and organization	Usage of technical language related to the content area; evident facility with needed vocabulary.	Approaching comparability to that of English proficient peers; errors don't impede comprehensibility.
6 Reaching*	A variety of sentence lengths of varying linguistic complexity in a single tightly organized paragraph or in well-organized extended text; tight cohesion and organization	Consistent use of just the right word in just the right place; precise Vocabulary Usage in general, specific or technical language.	Has reached comparability to that of English proficient peers functioning at the "proficient" level in state-wide assessments.

GRADE 6-12 - RUBRIC
(Revised July 29, 2014)*
Narrative Task (NT)

Construct Measured	Score Point 4	Score Point 3	Score Point 2	Score Point 1	Score Point 0
Writing Written Expression	The student response: is effectively developed with narrative elements and is consistently appropriate to the task; demonstrates purposeful coherence, clarity, and cohesion, making it easy to follow the writer’s progression of ideas; establishes and maintains an effective style, attending to the norms and conventions of the discipline.	The student response: is mostly effectively developed with narrative elements and is mostly appropriate to the task, demonstrates coherence, clarity and cohesion, making it fairly easy to follow the writer’s progression ideas, establishes and maintains a mostly effective style, while attending to the norms and conventions of the discipline.	The student response: is developed with some narrative elements and is somewhat appropriate to the task; demonstrates some coherence, clarity, and/or cohesion, making the writer’s progression of ideas usually discernible but not obvious ; has a style that is somewhat effective, generally attending to the norms and conventions of the discipline.	The student response: is minimally developed with few narrative elements and is limited in its appropriateness to the task; demonstrates limited coherence, clarity, and/or cohesion, making the writer’s progression of ideas somewhat unclear ; has a style that has limited effectiveness, with limited awareness of the norms of the discipline.	The student response: is undeveloped and/or inappropriate to the task; lacks coherence, clarity, and cohesion, has an inappropriate style, with little to no awareness of the norms of the discipline.
Writing Knowledge of Language and Conventions		The student response to the prompt demonstrates full command of the conventions of standard English at an appropriate level of complexity. There may be a few minor errors in mechanics, grammar and usage, but meaning is clear .	The student response to the prompt demonstrates some command of the conventions of standard English at an appropriate level of complexity. There may be errors in mechanics, grammar and usage, that occasionally impede understanding , but the meaning is generally clear .	The student response to the prompt demonstrates limited command of the conventions of standard English at an appropriate level of complexity. There may be errors in mechanics; grammar and usage that often impede understanding .	The student response to the prompt demonstrates no command of the conventions of standard English at an appropriate level of complexity. Frequent and varied errors in mechanics, grammar, and usage impede understanding .

The rubric is subject to further refinement based on research and study

ELL Resources

- **Learning style quiz for students-** <http://www.educationplanner.org/students/self-assessments/learning-styles-quiz.shtml>
- **“Word clouds” from text that you provide-**<http://www.wordle.net/>
- **Bilingual website for students, parents and educators:** <http://www.colorincolorado.org/>
- **Learn a language for FREE-**www.Duolingo.com
- **Time on task for students-**<http://www.online-stopwatch.com/>
- **Differentiation activities for students based on their lexile-** www.Mobymax.com
- **WIDA-** <http://www.wida.us/>
- **Everything ESL -** <http://www.everythingESL.net>
Judy Haynes' s ESL website with a discussion forum, lesson plans, teaching tips, & resources for teachers
- **ELL Tool Box Suggestion Site** <http://www.wallwisher.com/wall/elltoolbox>
best practices for various aspects of an English language classroom
- **Hope4Education -** <http://www.hope4education.com>
Books, online workshops, on-site training and presentations, help meeting the NCLB and state curriculum standards, discussion forums, and tele-chats hosted by Hope Blecher-Sass
- **Learning the Language** <http://blogs.edweek.org/edweek/learning-the-language/>
Mary Ann Zehr's blog for Education Week - news, controversies, initiatives, research, legislative updates about teaching English language learners
- **FLENJ (Foreign Language Educators of NJ) 'E-Verse' wiki:** <http://www.flenj.org/Publications/?page=135>
- **OELA -** <http://www.ed.gov/offices/OBEMLA>
The Office of English Language Acquisition, Language Enhancement, and Academic Achievement for Limited English Proficient Students
- **New Jersey Department of Education- Bilingual Education information** <http://www.state.nj.us/education/bilingual/>
- **Learning Resource Centers (LRC Network)** <http://www.state.nj.us/education/lrc>
supported through the NJDOE, Office of Special Education Programs.

ELL Resources

Click on "Services" and scroll down to the library in your region.

- **1-Language.com** - <http://www.1-language.com>
Activities, exercises, worksheets, forums, chats, articles, and more
- **Repeat After Us** - <http://repeatafterus.com/>
The best collection of copyright-free English texts and scripted recordings
- **Learning Vocabulary Can Be Fun** - <http://www.vocabulary.co.il>
Games and quizzes for practicing vocabulary

Students K-12

- **Teaching Reading and Language Arts** - <http://teachingreadingandla.pbworks.com>
Sites and resources for classroom instruction compiled by Keith Schoch
- **Mrs. Hurley's ESL Page** <http://www.mrshurleysesl.com>
Tips, activities, information & links for students and teachers
- **Children's Literature Web Guide** - <http://www.ucalgary.ca/~dkbrown/index.html>
Many Internet resources related to books for children and young adults including lists, reviews, and lesson plans & more
- **21st Century Centers** <http://www.21stcenturycenters.com/21cc/Home.html>
Implement "Centers" in a high school classroom using the i-pod touch
- **Windows to the Universe** - English: <http://www.windows.ucar.edu> Spanish: <http://www.windows.ucar.edu/spanish>
A comprehensive science education and reference site spanning a broad range of Earth and Space Science topics and related topics in the humanities
- **ESL Summer Programs at Colleges in New York State for Kids & Teens 8-18**
<http://www.summeroncampus.com/main/ActivityProgramsList.asp?CategoryID=25>
Search by college or location. Updated annually